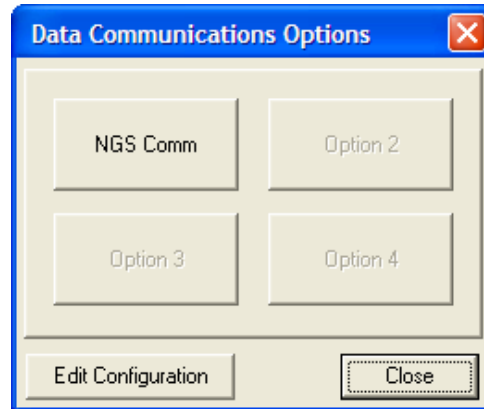


7. Select **OK**.
8. Data Communications screen should now read as follows.



The NGS Comm option should take you to the NGS Communication Software when selected.

You are ready to begin using NGS Comm to exchange electronic transactions with CEDI.

### Acquiring the CEDI Gateway Dialup Number

Contact the CEDI Help Desk via email at [ngs.cedihelpdesk@wellpoint.com](mailto:ngs.cedihelpdesk@wellpoint.com) to obtain the dial-in number you will need to connect to CEDI. You will need to provide your Trading Partner/Submitter ID (for example, A08123456) and the name of your company. The CEDI Help Desk will respond via email with the dial-in number.