

PC-ACE Pro32 Upgrade Instructions

Important: Please follow these recommendations before starting the upgrade.

- First make sure that you have a valid backup of the PC-ACE Pro32 software. For instructions on this please view the General Setup document on our Web page.
- Second make sure the PC-ACE Pro32 software is closed out completely. The upgrade will not run correctly if the software is open during the upgrade process.

Please note the installation code is in bold red letters directly above the upgrade link.

Step 1

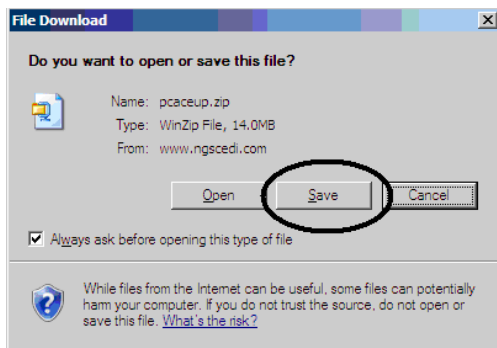
Start the upgrade by clicking the link that reads:

[PC-ACE Software – Upgrade version 2.36](#) 

Step 2

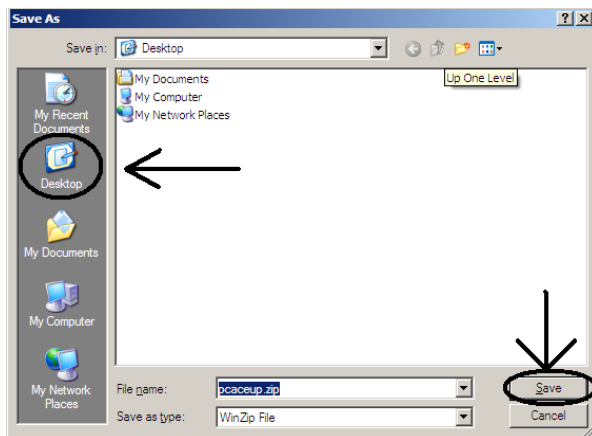
This should open a window with options Open, Save, or Cancel.

Choose Save.



Step 3

Click the icon on the left that says Desktop, then click save.



Step 4

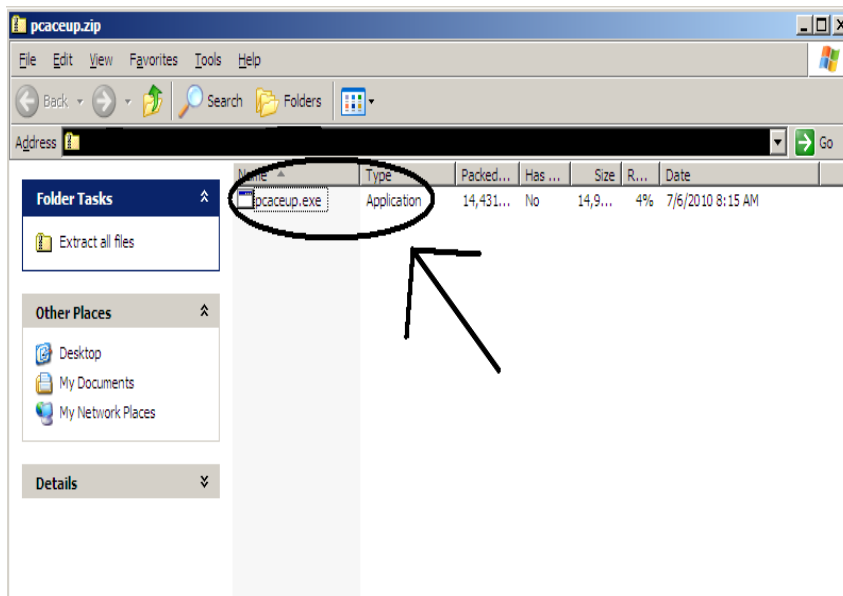
You should now have an ICON on your Desktop named ppaceup or ppaceup.zip.



WARNING: This ICON may have a different appearance than the examples above.

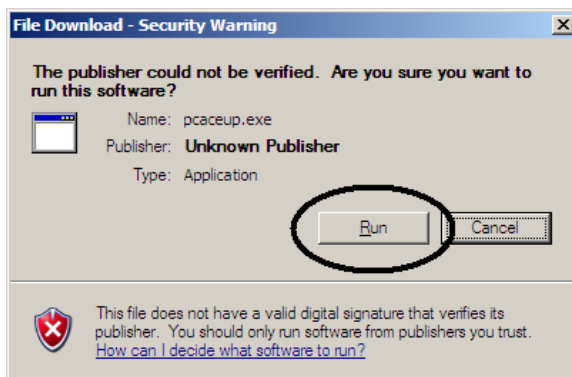
Step 5

Double click on the icon, and it should open a folder with an ICON inside with the same name, ppaceup.



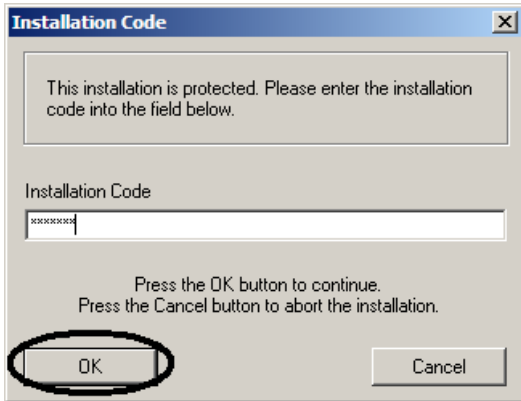
Step 6

Simply double click on this icon and you should get the message below.



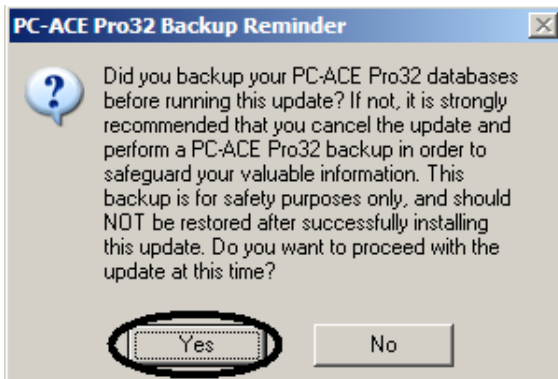
Step 7

This should pull up the installation wizard and you will be asked for an installation code. This installation code is **NGSMAC1**. Then click OK



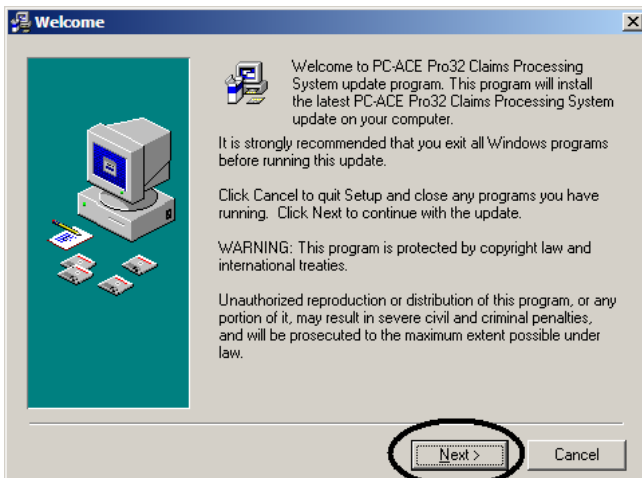
Step 8

Once the installation code is entered and you have a valid backup of the software (recommended) click Yes.



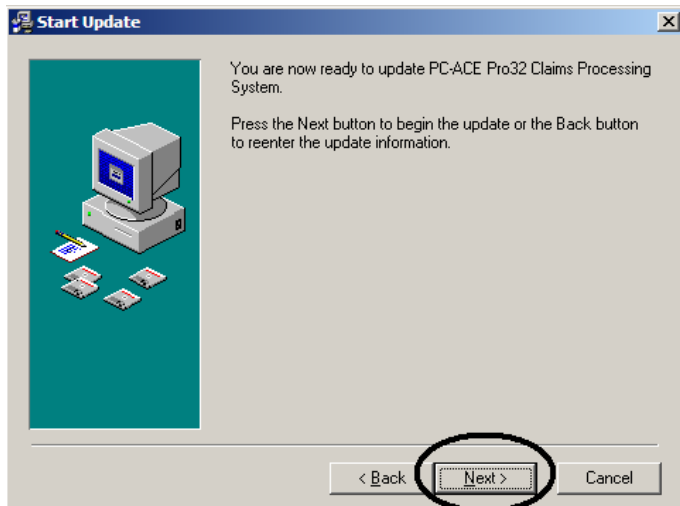
Step 9

You will be recommended to close all background Programs. The upgrade will not run unless the PC ACE itself is completely closed out in the background.



Step 10

You are now ready to start your update. Click next to finish the upgrade installation.



Congratulations your software is now up to date!!!

If you would like to check the current version you are running. Select Help from the main menu of the PC-ACE Pro32 software. Select About PC-ACE Pro32.

The version should now read (2.36.0.100).